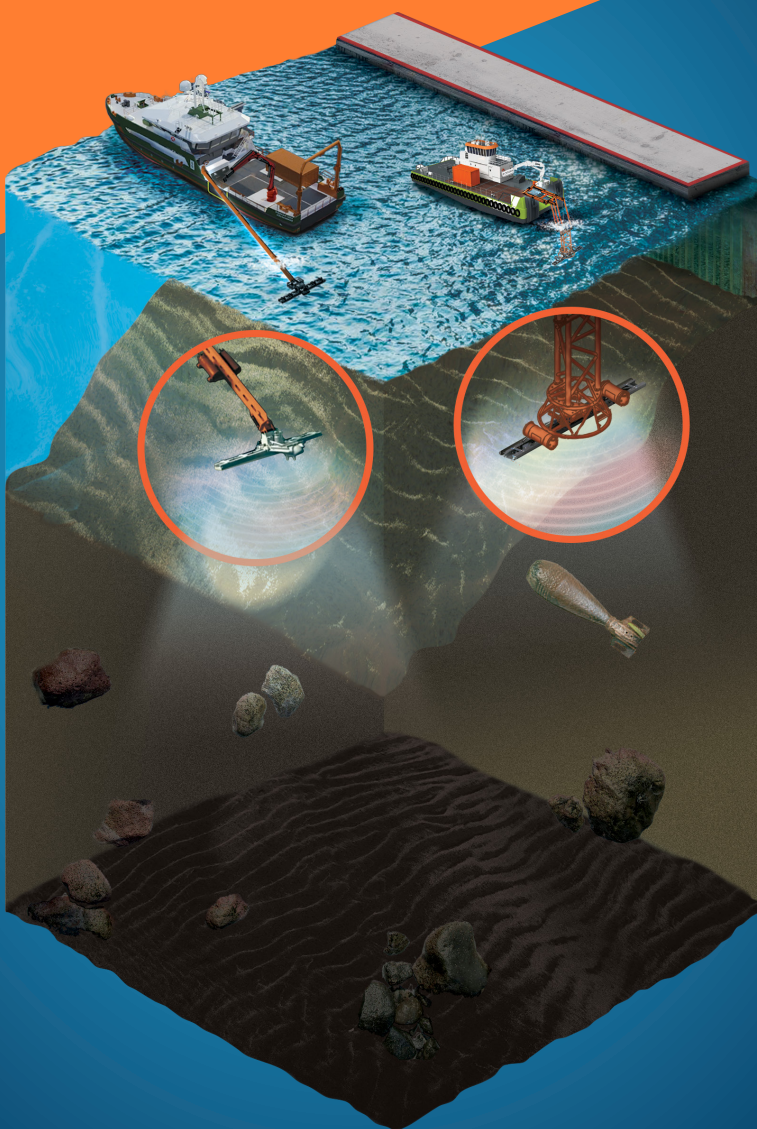


PRECISION NEARSHORE UXO DETECTION



PANGEO
SUBSEA
sounding out risk

THE GEOARM & GEOLINK

GEOARM

- Modular vessel mounted arm operational in depths from 0-16m
- Can be configured in length for vessels of varying sizes and water depths
- Freely manoeuvrable and operational 16m from the vessel

GEOLINK

- Stable vessel platform operating in depths from 0-8m
- Swivel head allows close proximity surveys near port infrastructure
- Both equipped with Hydraulic Power and Control Units

FEATURES & BENEFITS

- Utilizing PanGeo's Sub-Bottom Imager (SBI) technology
- Acquires 3D acoustic volumetric swath: 5m wide to depths of 5 – 8 m
- Identifies size, shape and orientation of buried hazard with 10 cm resolution
- Acoustic imaging of both ferrous and non-ferrous targets
- Accurate position, sizing of all identified magnetic pUXO targets
- Images beyond the 1.5 m limitation of other systems
- Verification of magnetometer targets: reducing UXO investigations by 75%
- Customer is provided with images of the acoustic anomalies

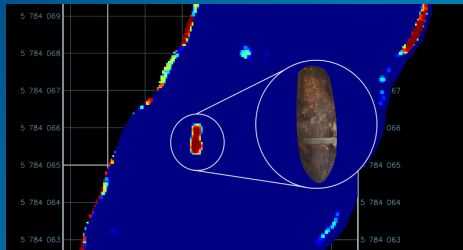


GEOARM

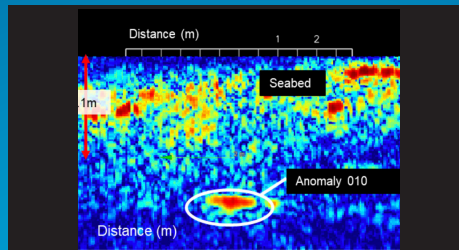


GEOLINK

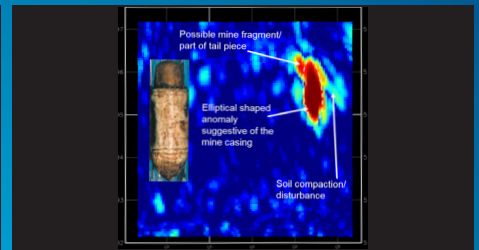
HIGH RESOLUTION 3D SAS SUB-BOTTOM IMAGERY



3D volumetric data set - one line gives 5m swath of coverage at the seabed



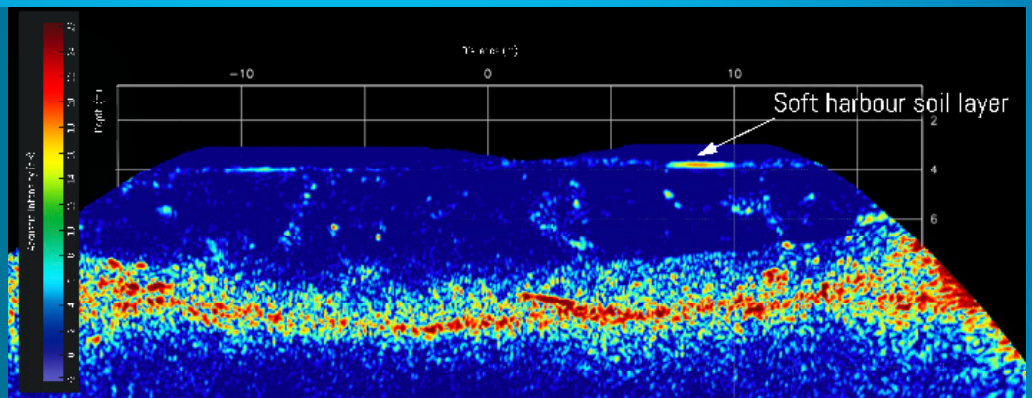
Horizontal slice reveals the cable image within the volume



2D profile view of the cable

GEOARM & GEOLINK SURVEY RESULTS OF BURIED UNEXPLODED ORDNANCE (UXO)

GeoLink data imagery as seen in real-time – 2D vertical profile slice



Visual representation of actual buried UXO located by GeoLink and previously undetected by magnetometry and sub-bottom profiler

